

FEC POWER *Source*

Vol. 23 No. 06

Farmers' Electric Cooperative, Inc. is an equal opportunity provider and employer.



Riley, Bidegain Re-elected at 81st Annual Meeting of Members

Farmers' Electric Cooperative held its 81st Annual Meeting of members Saturday, May 11, 2019 at the Melrose High School Gym, Melrose, New Mexico with 246 members and their guests present. Board President, Michael West, called the business meeting to order at 10:30 a.m. Trustees, Ernest Riley (District 2 - Melrose) and Donnie Bidegain (District 7 - San Jon/Logan) ran unopposed and were re-elected by acclamation. Terms for FEC Trustee positions are three years.



Ernest Riley District 2

Members heard from New Mexico Rural Electric Cooperative Association's (NMRECA) CEO, Keven Groenewold, about challenges facing Cooperatives under a new Governor and mandates and goals in becoming more renewable and less reliant on carbon-based generation. Mr. Groenewold emphasized that most Cooperatives in New Mexico are already approaching 30% renewable and got there largely based on smart economics rather than through government mandates.

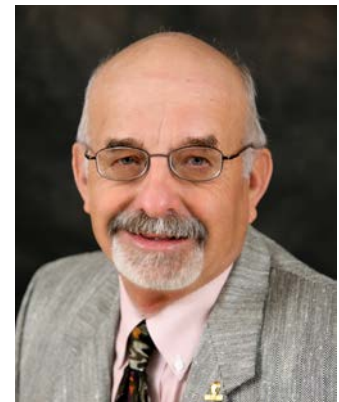
Western Farmers Electric Cooperative (WFEC) CEO, Gary Roulet, gave an update to the members as it pertains to the wholesale side of electricity. Roulet touted a contract for energy from a large solar array to be built in southeastern New Mexico over the next couple of years which will have a nameplate capacity of 220 Mega Watts. He also underscored the challenges, given today's technology,



Donnie Bidegain District 7

Barnes Named by Board to Replace Retiring Tate in District 1 - Clovis

Justin Barnes was recently appointed by the FEC Board of Trustees to fill the Trustee vacancy created by the departure of longtime Trustee, Billy Tate. Tate, a dedicated and faithful Board



Billy Tate

member representing District 1 - Clovis for 25 years said, "It's just time." Tate, a farmer from the Ranchvale area said, "I have really enjoyed serving the members of Farmers' Electric over all



Justin Barnes District 1

See ANNUAL MEETING on PAGE 3

See BARNES on PAGE 3



Board of Trustees:
 Mike West
President
 George Dodge
Vice President
 Donnie Bidegain
Secretary-Treasurer
 Justin Barnes
Trustee
 Paul Quintana
Trustee
 Ernest Riley
Trustee
 Pat Woods
Trustee

General Manager:
 Lance R. Adkins

POWER SOURCE
 is published monthly
 by Farmers' Electric
 Cooperative, Inc.
 Questions or article
 ideas should be
 directed to :
 Thom J. Moore,
POWER SOURCE
 P. O. Box 550
 Clovis, New Mexico
 88102-0550
 Phone (575) 762-4466
 or (800) 445-8541
 thom@fecnm.org

**To Report
 An Outage**
 We are on-call 24
 hours each day,
 365 days each year,
 to serve *your* electric
 power needs.

Clovis
 (575) 762-4466
Fort Sumner
 (575) 355-2291
Santa Rosa
 (575) 472-3971
Toll Free
 (800) 445-8541

ANNUAL MEETING *from* **PAGE 1**

to ever becoming carbon-neutral. He stressed that in order to get there, utility-grade battery technology would have to play a key role.

Farmers' Electric Cooperative (FEC) General Manger, Lance Adkins delivered what might have been the most telling speech of all as he described the costs involved in delivering power across such a vast rural service area. He explained the cost of poles, wires, transformers, employees, insurance, and other over-head expenses still exists whether or not anyone buys a single kWh. He mentioned that maintaining and replacing an aging infrastructure is an ever-increasing expense. Another real concern to Adkins are those members installing distributed generation, primarily solar panels, completely offsetting their monthly purchases from FEC. Adkins indicated that the Cooperative has identified a need to revise rates to address this revenue loss. He stressed that it is important to encourage member choice in distributed generation technology, but not at the expense of other members.

Thanks go out to all those in attendance and all the employees who worked to help make the annual meeting a huge success. Employees who worked, (not eligible for annual meeting door prizes), did participate in a separate drawing. The winner, Noemi Avilez, Billing Clerk from Clovis, will receive a gift certificate to her favorite restaurant, courtesy of Farmers' Electric. Congratulations Noemi!

Congratulations also go out to Elmer White of Grady for winning this year's grand prize of \$1,000 in free electricity! Two "first-time" attendee prizes, (\$50 energy certificates), were also awarded. A child's grand prize, a 32" LED TV, was awarded to a lucky young person in attendance. There were a total of 110 prizes awarded to adults and children.

A special "Thank You" goes out to Melrose School Superintendent, Jamie Widner for making us feel so welcome, and the Junior High Cheer Team and sponsors for all their help serving the meal to approximately 400 guests. Also, thanks to Bigam's BBQ out of Lubbock, Texas for catering an exceptionally good traditional BBQ lunch.

BARNES *from* **PAGE 1**

these years and will miss many people associated with the Cooperative that I consider good friends." He added, "I have learned a lot about the electric industry and cooperatives in general. I hope, through the decisions I helped make, the Cooperative, its employees, and Its members are better for it."

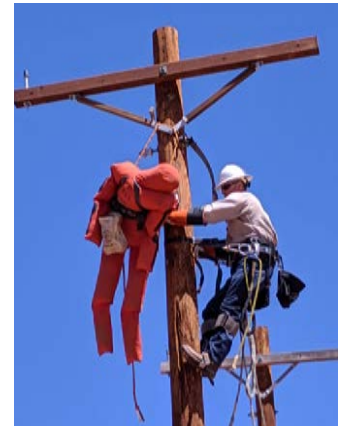
Barnes, a fourth generation farmer from the Pleasant Hill area and a 1988 graduate of Texico High School, said, "I'm honored that the Farmers' Electric Board of Trustees thought I was worthy of serving." When asked what quality he had would best serve the Board and members of the Cooperative, Barnes sad, "my ability to listen to different points of view and then make sound, educated decisions based largely on those points of view."

Billy Tate will be sorely missed by everyone associated with FEC. Welcome aboard Justin!

Pole-Top Rescue Training

As a lineman, you hope you never need to use it. As a victim, you pray someone knows how to use it. Pole top rescue is just as the phrase implies. It is a routine that linemen learn and practice because, if there is ever an accident involving a fellow lineman, he/she can be brought down safely.

During their training, the lineman first climbs the pole. They are safely belted around the pole so he/she will be able to work, "hands free." A rope is looped over the cross arm and then tied around the chest of the injured lineman. A life-sized mannequin,



weighing approximately 175 lbs., is used during this exercise in training). This may sound fairly easy so far, however, consider this – the rescuer has to think about where his hooks are in the pole, where to throw the rope over the cross arm so it doesn't get crossed or snagged, how he is going to tie the knot around the victim so that it will stay tight, and finally, how he/she will lower their buddy down in less than three minutes in order to start CPR – it gets very difficult and very stressful.

Our linemen practice pole top rescue procedures until they become routine. If a situation in the field ever arises, the rescue would almost be second nature. FEC linemen attend monthly safety meetings to sharpen their skills and learn safe working practices and procedures. As for pole top rescue, this is one skill they hope they never have to use.

Too Close for Comfort

If your home is served by underground electric cable, you may be tempted to plant flowers or shrubs to disguise the transformer cabinet on your property. Please don't give in to your temptation.

Line crews need easy access to those cabinets to perform routine maintenance and repairs. Shrubs, trees, and flowerbeds can block access or make access more difficult. After the necessary utility work is done, you may be unhappy about the condition of your plants.

It is dangerous to plant or work close to transformer cabinets. They contain high-voltage connections originating from and traveling underground from our distribution power lines. Our most common voltage to these cabinets is 14,000 Volts. Please avoid these cabinets at all times – and teach children to stay away too.

Only trained professional personnel are qualified to work around these cabinets. Additionally, when not being serviced by our line crews, these cabinets should remain padlocked. If you ever notice a cabinet missing a lock or a lock not fully engaged, keep everyone a safe distance away and call Farmers' Electric immediately. This call could mean the difference between life and death.



WARNING!

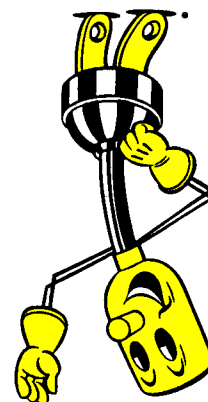
Please Move Over For Emergency And Utility Crews

If you see police, firefighters, utility crews, or other emergency personnel on the side of the road, please slow down and move over when safely possible.

Together, we can keep our crews safe.



“Owned By Those We Serve”



FARMERS' ELECTRIC COOPERATIVE, INC.
OF NEW MEXICO
3701 Thornton St., P.O. Box 550
Clovis, New Mexico 88102-0550

PRESORTED
STANDARD
U.S. POSTAGE PAID
CLOVIS, NM
PERMIT NO. 64